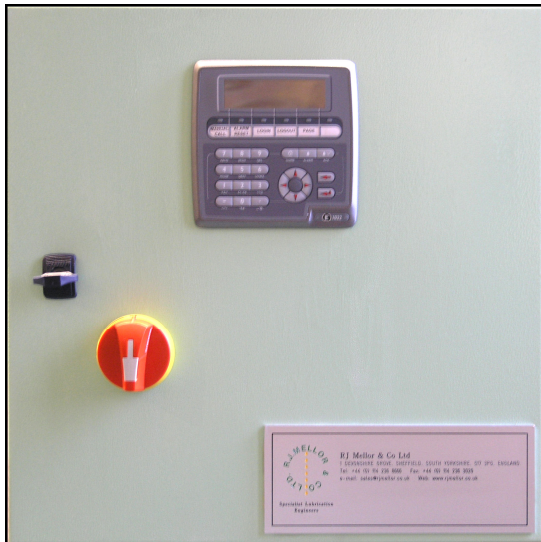


Spray System Control Panel



The Control Panel is used to control the operation of the spraying system. The input voltage is usually 110v although other voltages can be selected.

The system is controlled by a Mitsubishi PLC, providing information of the system operation (in the selected language i.e. English, French, German etc.) to the "HMI" unit which is secured to the panel door.

The information covers

- φ Pump running
- φ No lubricant
- φ No grease flow
- φ No air flow or pressure
- φ Completed cycles/grease usage
- φ Hours power to panel
- φ Audible alarm for system malfunction
- φ Reset Button

The reset button will reset system control after any malfunction. On start-up of the gear train depress the button 10 times for 15 minutes of continuous spraying; after this period it will return to the factory-set 6-minute cycle.

The system is completely tamper-proof and can only be altered after introducing the HMI access code.

Volt-free contacts are standard for remote monitoring of the system.

Electrical connections within the spray panel are plug and socket type ensuring incorrect wiring does not occur during site installation.

All the equipment is housed in an all- metal enclosure to IP 65 standard.

The on and pause times are set to provide the optimum lubricant requirements as determined by the gear train's requirements. These requirements are set at the factory and are subject to a 24-hour test procedure prior to dispatch.

Changing settings via "HMI Unit"



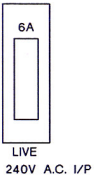
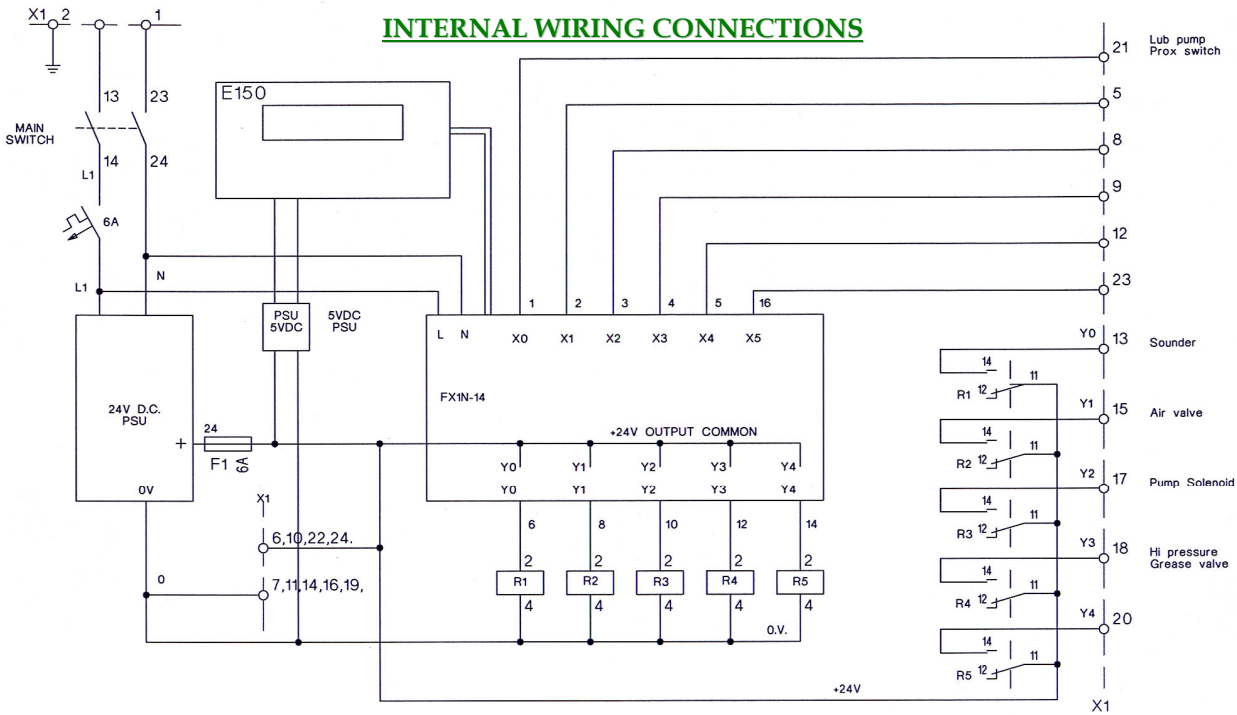
- φ Press log in button, key in password (2751731) then press enter.
- φ Press setting button which displays spray time set at 100 seconds, to change key in the new number, then enter.
- φ Scroll down will display the number of pulses, change as above. Pulses has preference over time but is the maximum spraying time.
- φ Press page and this will illustrate the state of the system i.e. automatic mode, manual mode, no flow, insufficient air etc.
- φ At start up key in password, press enter, press manual button 10 times for 15 minutes of continuous spraying.
- φ After completing any changes press the log out button.

Use to scroll up, down, forward and backward.

Enter.
Delete last character entered.

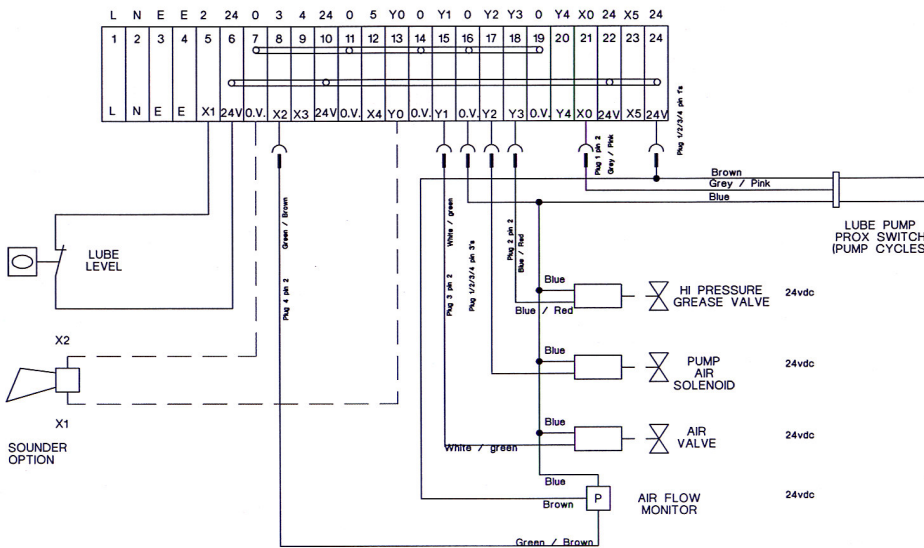


Spray System Control Panel



EXTERNAL WIRING CONNECTIONS

MULTICORE WIRES



Terminal	Plug	Pin	Color	Label
24	Plug 1	Pin 1	Brown	24VDC
21	Plug 1	Pin 2	Grey / Pink	X0
16	Plug 1	Pin 3	Blue	OVDC
24	Plug 2	Pin 1	Brown	24VDC
18	Plug 2	Pin 2	Blue / Red	Y3
16	Plug 2	Pin 3	Blue	OVDC
24	Plug 3	Pin 1	Brown	24VDC
15	Plug 3	Pin 2	White / Green	Y1
16	Plug 3	Pin 3	Blue	OVDC
24	Plug 4	Pin 1	Brown	24VDC
8	Plug 4	Pin 2	Green / Brown	X2
16	Plug 4	Pin 3	Blue	OVDC
16	Plug 4	Pin 4	Grey	



R J Mellor & Co Ltd

1 Devonshire Grove, Sheffield, South Yorkshire, England, S17 3PG

Tele: +44 (0) 114 236 8666 Fax: +44(0) 114 236 3020

E-mail: sales@rjmellor.co.uk Web: www.rjmellor.co.uk

Specialist Lubrication
Engineers

The information contained in this data sheet is for guidance only and does not form part of any contract. The accuracy cannot be guaranteed as R J Mellor & Co Ltd. has an ongoing process of development and reserve the right to change the specification of their products without notice